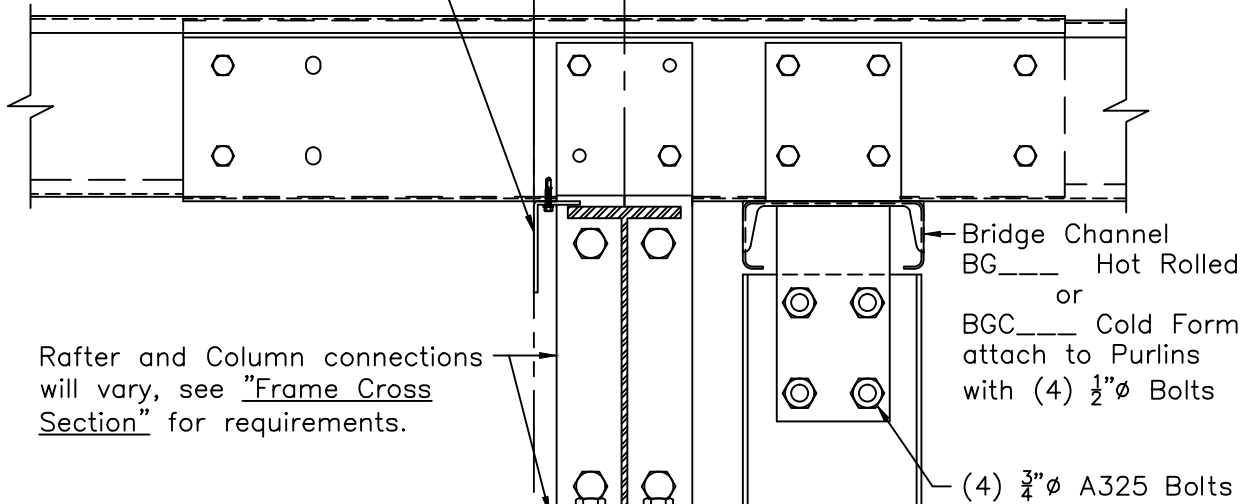


Flush Transverse Partition - 1" Inset Load Bearing Col at Peak (Raft Spliced) Type 3 Conn. with Column Ext. to Bridge Channel

Sheeting Angle RA1
Attach to each Purlin with
(1) Fastener #1B
 $\frac{1}{4}$ "-14 x $1\frac{1}{4}$ " DP3
(Field Notch at Shop Welded
Purlin Clips when Offset is 4")

Girt and Rafter
Offset 4" (w/8" Girts)
5" (w/10" Girts)
6" (w/12" Girts)



Rafter and Column connections
will vary, see "Frame Cross
Section" for requirements.

Bridge Channel
BG____ Hot Rolled
or
BGC____ Cold Form
attach to Purlins
with (4) $\frac{1}{2}$ " ϕ Bolts

(4) $\frac{3}{4}$ " ϕ A325 Bolts

Typical 1" Inset Girt attachment,
attach with (2) $\frac{1}{2}$ " ϕ Bolts to Shop
Welded Clip (See "Transverse Partition
Framing Elevation" for locations)

Multi-Span Frame Column
acting as 1" Inset Partition Column
(See "Frame Cross Section" for
locations and Part Marks)

Sheeting Clip
CL207 or PC29_
(1) Fastener #12A
12-14 x 1" DP3
at each end

Partition Base Framing
Standard Base Angle RA1 shown,
may vary. (See "Transverse Partition
Framing Elevation" for requirement.)

Field Cut Partition
Base Framing at
Column

$\frac{1}{4}$ " ϕ Anchor (Min.)
60" o.c. (Max.)
Not by Bldg. Mfr.

Zee Girts shown, attachment
similar for Cee or Zee Girt
with outer flange toed up.