

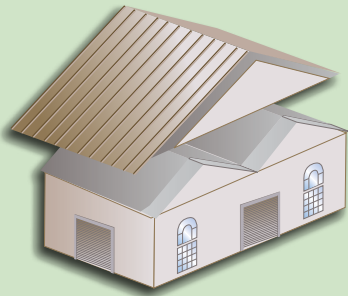
Retrofit. *Re-Roof*



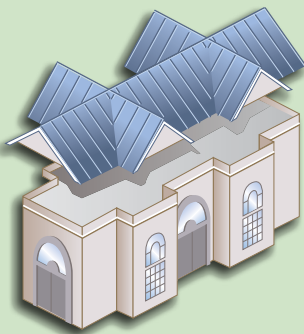




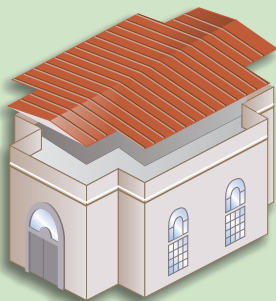
## Why NuRoof® Retrofit Systems?



Roof-Geometry Solutions



High-Slope Architectural



Low-Slope Utilitarian

We have experience in retrofitting existing buildings proven with millions of square feet of successfully completed projects.

Often, a conventional retrofit framing system may not work due to high wind loads, snow loads or for complex roof geometries. We offer expert and professional design capabilities to enable custom solutions.

Our manufacturing plants are IAS accredited under AC472 reinforcing a commitment to quality assurance.

Our extensive metal roof system product offerings provide the design professional with an array of options from simple solutions to high-profile architectural installations.

The NuRoof® Retrofit Framing System is included in our highly respected Certified Installer Program, which offers training in the basic fundamentals of retrofitting buildings. Training includes hands-on installation of the NuRoof® framing system and standing seam metal roof systems.

Testing protocols, such as ASTM E-1592, are performed in the most modern test laboratory facilities in the industry. Many of our products also earn approvals by UL (Underwriters Laboratories) and FM (Factory Mutual).

We have systems designed that address retrofitting over existing metal roofs to upgrade to current building code requirements and to comply with Factory Mutual Certification. These systems can be designed to increase the building's thermal efficiency by adding insulation between the old and new roof.

### NuRoof® and New Construction

For new construction projects, the NuRoof® system is an economical and competitive alternative to prefabricated truss construction.

### Green Advantages

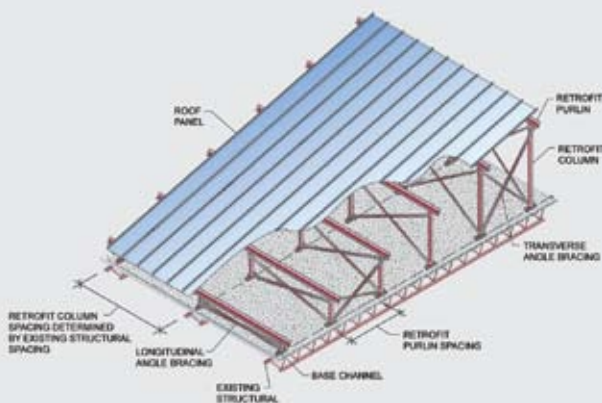
Metal roofs are energy efficient, recyclable, durable, lightweight and cost effective. Our panels are made from 25-35 percent recycled materials and are 100 percent recyclable. Cool metal roofing offers energy savings benefiting both economical and environmental concerns. In addition to potential energy savings, our products can help your project gain LEED points.



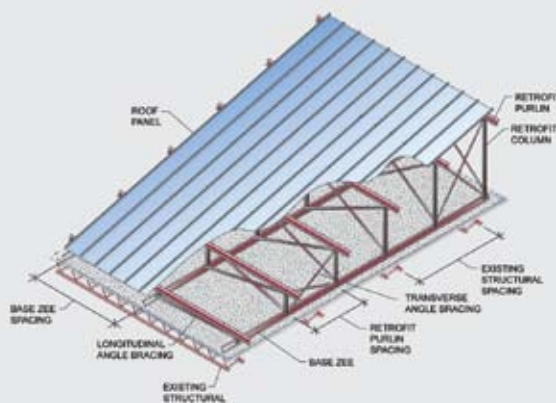
NuRoof® is a light-gauge framing system fully designed to create a sloped roof plane and ready to accept a new metal roofing system. You can choose either a low-slope functional and economical system where the roof is barely visible from curbside. Or, you can choose a high-slope system with a painted standing seam metal roof system that adds to the aesthetics of the building. Additional materials, such as EIFS or other products, can further update and beautify the existing building. This retrofit concept has been embraced by public school systems, municipal and state government agencies as well as the federal government. We are recognized for expert solutions supported by professional analysis and proven performance products.

## NuRoof® Retrofit Solutions Offer Adaptability

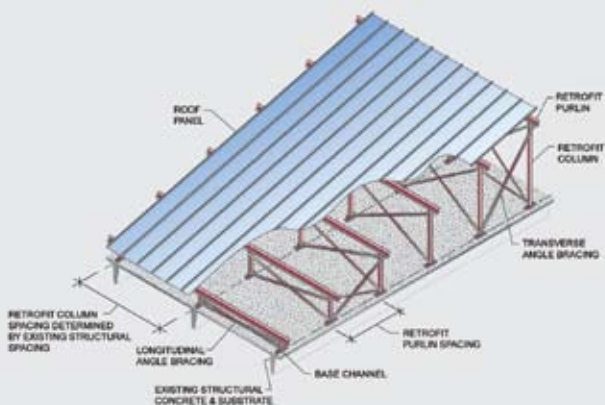
Regardless of whether your roof substrate is steel, wood or concrete, the retrofit concept can be employed to satisfy the building owner's requirements. We have the experience required to design the retrofit framing system that will comply with the original loads of the substrate. Our rigid design process ensures every NuRoof® System is engineered properly to give you the peace of mind that it will perform for you.



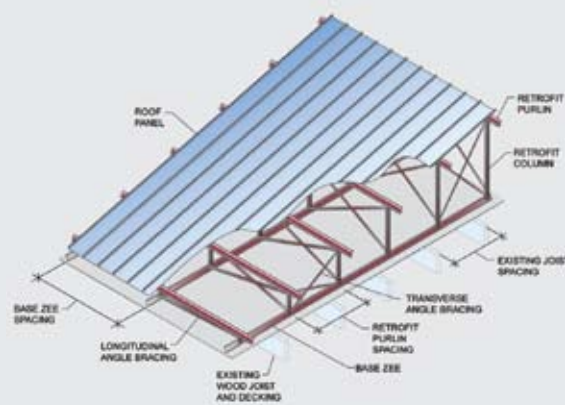
**Parallel Framing Over Steel Bar Joist**



**Perpendicular Framing Over Steel Bar Joist**



**Parallel Framing Over Structural Concrete**



**Perpendicular Framing Over Wood Joist**

Descriptions and specifications contained herein were in effect at the time this publication was approved for printing. In a continuing effort to refine and improve products, Star Buildings reserves the right to discontinue products at any time or change specifications and/or designs without incurring obligation. To ensure you have the latest information available, please inquire or visit our website at [www.starbuildings.com](http://www.starbuildings.com). Application details are for illustration purposes only and may not be appropriate for all environmental conditions, building designs or panel profiles. Projects should be designed to conform to applicable building codes, regulations and accepted industry practices. If there is a conflict between this manual and project erection drawings, the erection drawings will take precedence.



Reach for Star

For more information about how Star can add to your success,  
call 1-800-879-7827 or visit [www.StarBuildings.com](http://www.StarBuildings.com).  
Join the team you know you can depend on.

Star Building Systems  
an NCI Company  
8600 South I-35, Oklahoma City, OK 73149  
[www.StarBuildings.com](http://www.StarBuildings.com) | [star.marketing@starbuildings.net](mailto:star.marketing@starbuildings.net)