

Installation of Mounting Bracket and Large Mounting Plate to Steel Door Jamb for Overhead Steel Door

NOTES:

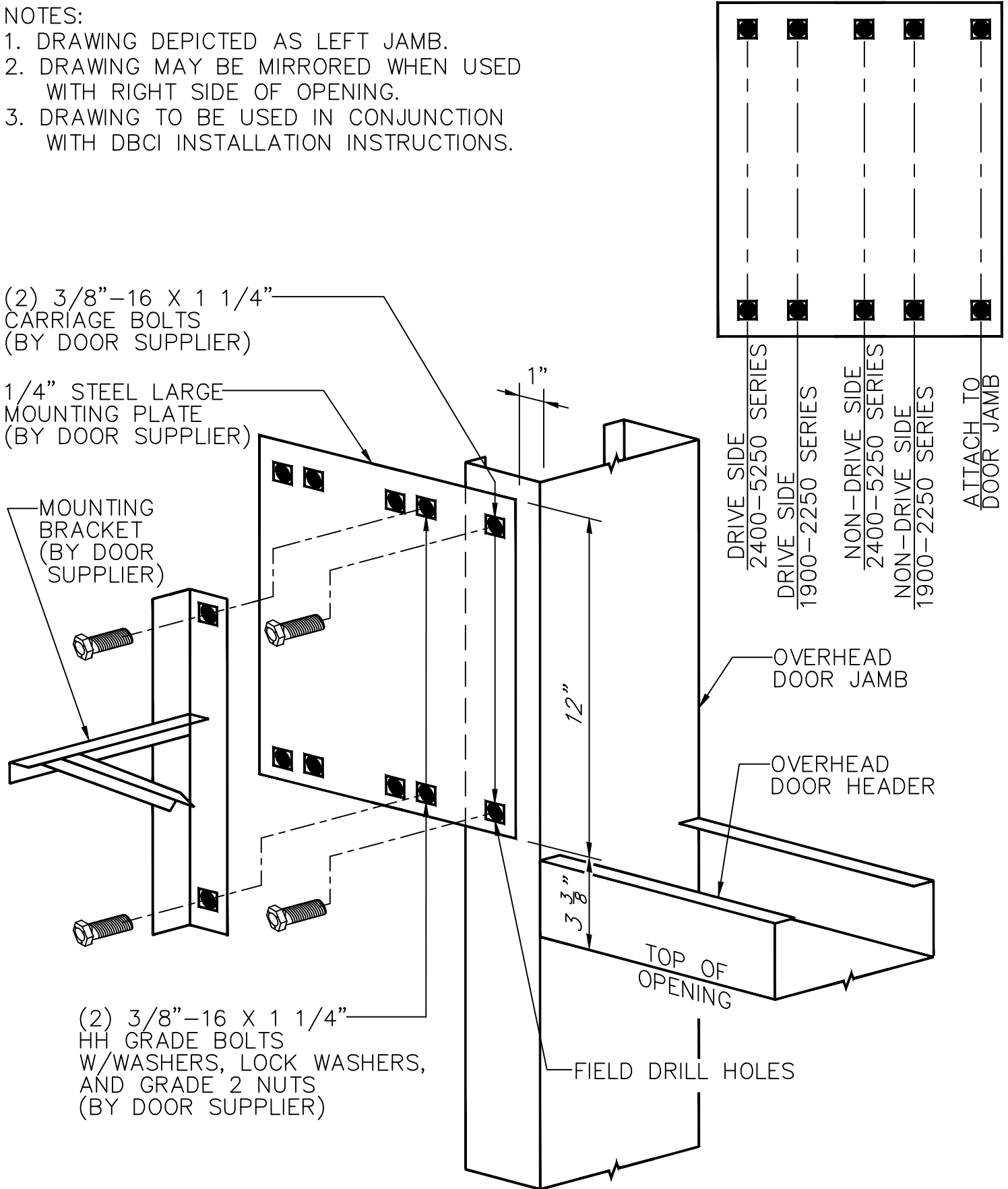
1. DRAWING DEPICTED AS LEFT JAMB.
2. DRAWING MAY BE MIRRORED WHEN USED WITH RIGHT SIDE OF OPENING.
3. DRAWING TO BE USED IN CONJUNCTION WITH DBCI INSTALLATION INSTRUCTIONS.

(2) 3/8"-16 X 1 1/4"
CARRIAGE BOLTS
(BY DOOR SUPPLIER)

1/4" STEEL LARGE
MOUNTING PLATE
(BY DOOR SUPPLIER)

MOUNTING
BRACKET
(BY DOOR
SUPPLIER)

(2) 3/8"-16 X 1 1/4"
HH GRADE BOLTS
W/WASHERS, LOCK WASHERS,
AND GRADE 2 NUTS
(BY DOOR SUPPLIER)



REFERENCE DBCI INSTALLATION MANUAL FOR FURTHER DETAILS